

# Glad you're here!



## Zoom Housekeeping

1. Rename yourself to include the community or organization you represent.  
Example: *Shannon Fergus (ms consultants)*
2. If you are joining by phone, please unmute and let us know who you are!
3. If you need to take a call or step away from the meeting but intend to rejoin, do not fully exit the meeting - just mute yourself.

**Welcome to Lake  
Erie Connect  
Strategy  
Committee #2!**

**Thank you!**



# LAKE ERIE CONNECT

## NOACA Regional Lakefront Study

[LakeErieConnect.com](http://LakeErieConnect.com)

#makeittothelake





**INTRODUCTION**

**PRIORITIZING EQUITY**

**LAKEFRONT INITIATIVES**

**THE PATH FORWARD**

**NEXT STEPS**



## INTRODUCTION

## PRIORITIZING EQUITY

## LAKEFRONT INITIATIVES

## THE PATH FORWARD

## NEXT STEPS

# INTRODUCTION

## What is Lake Erie Connect?



## NOACA Transportation for Livable Communities Initiative (TLCI)

NOACA's Transportation for Livable Communities Initiative (TLCI) provides assistance to communities and public agencies for integrated transportation and land use planning and projects that strengthen community livability. TLCI advances the goals of NOACA's Regional Strategic Plan by focusing on the following objectives:

- Develop transportation projects that provide more travel options through complete streets and context sensitive solutions, increasing user safety and supporting positive public health impacts
- Promote reinvestment in underutilized or vacant/abandoned properties through development concepts supported by multimodal transportation systems
- Support economic development through place-based transportation and land use recommendations, and connect these proposals with existing assets and investments
- Ensuring that the benefits of growth and change are available to all members of a community by integrating principles of accessibility and environmental justice into projects
- Enhance regional cohesion by supporting collaboration between regional and community partners
- Provide people with safe and reliable transportation choices that enhance their quality of life

# INTRODUCTION

## Team & Objectives



### Consultant Team



Project Management  
Planning  
Transportation  
Engagement  
Document Creation  
Funding & Implementation



Placemaking



Equitable Access Plan  
Bike & Pedestrian Access



Environmental Conditions  
Equitable Access Plan  
Bike & Pedestrian Access

### Today's Objectives

1

Review plan purpose and goals

2

Share methodology and findings (so far)

3

Summarize lakefront initiatives

4

Gather input on our next steps

# INTRODUCTION

## Lake Erie Connect Goals



The NOACA Regional Lakefront Connectivity Study is a Transportation for Livable Communities Initiative (TLCI) planning effort focused on improving access to Lake Erie.

**Lake Erie Connect aims to close regional access gaps to existing and future lakefront assets. This will be accomplished by enhancing regional connectivity, ensuring access for all users, and considering environmental conditions and impact.**

### CONNECTED

Making it easy to travel throughout our region benefits us all. The plan will evaluate both North/South and East/West connectivity.

### SUSTAINABLE

Lake Erie is a vital natural asset to our region. It is important that we protect and respect it while planning for development and strive to confront existing issues.

### EQUITABLE

The lakefront belongs to all of us. We must ensure equitable access for everyone in our region, no matter the starting point or mode of travel.

# INTRODUCTION

What can we accomplish?



# CREATE A REGIONAL VISION



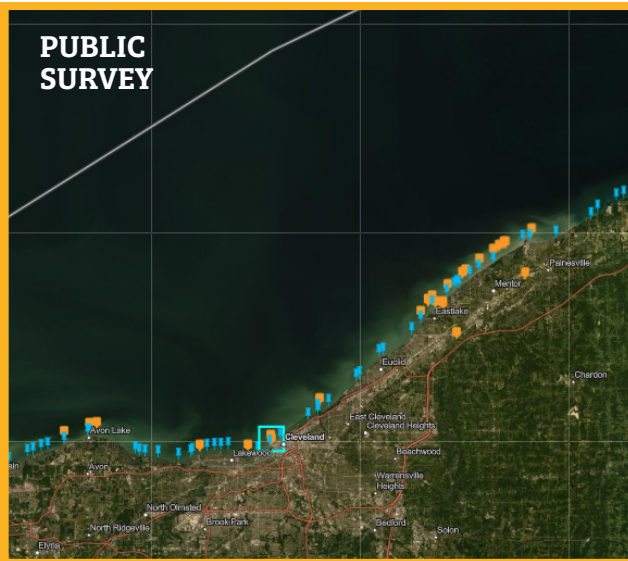
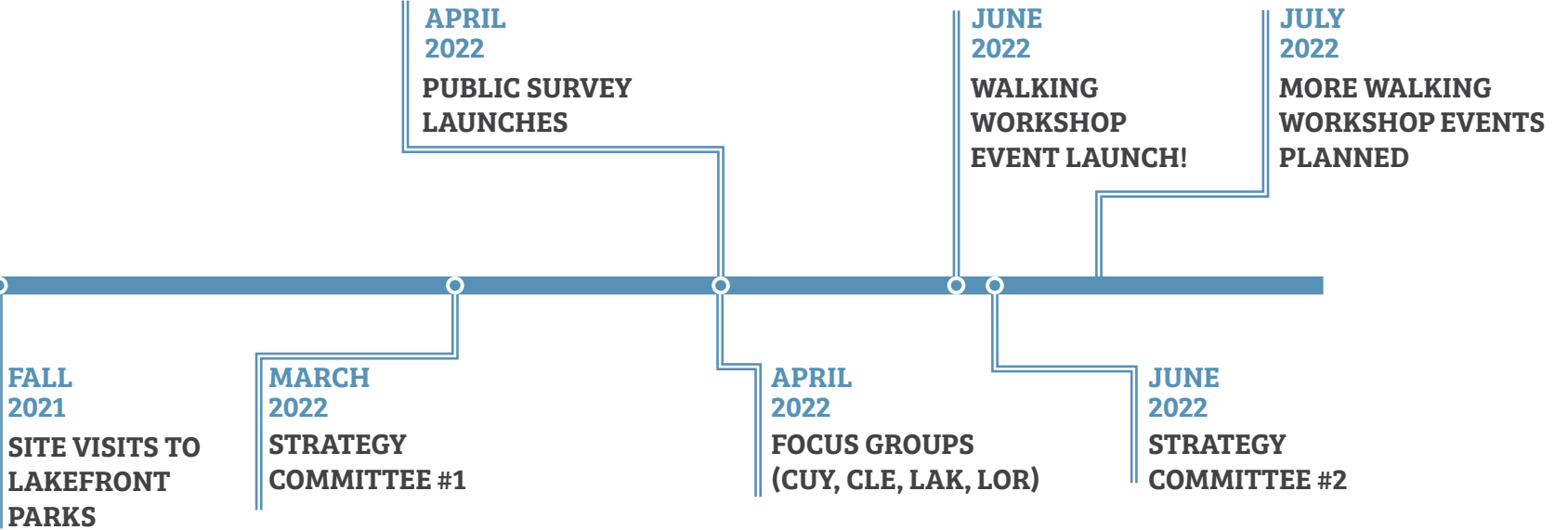


# INTRODUCTION

## Engagement To Date



### PUBLIC Stakeholders



# INTRODUCTION

## What We're Learning...



# 1

## MANY PLANS, ONE LAKEFRONT

A cohesive lakefront vision means we must consider all of the various planning efforts... and there are many!

# 2

## PEDESTRIANS & BICYCLISTS ABOUND

Around one-third of lakefront visitors walk or bike to lakefront parks!

# 3

## ACCESS MATTERS

Private land, physical barriers and difficult biking & walking conditions prevent safe, continuous access.

# 4

## RESPOND TO NEEDS

Every lakefront community and park has a different set of needs. This plan is not one size fits all!

# 5

## PROTECT THE COAST

Lake Erie's shoreline is a rare and fragile ecosystem. Assets must and can be preserved while also improving public access.

# AGENDA



INTRODUCTION

**PRIORITIZING EQUITY**

LAKEFRONT INITIATIVES

THE PATH FORWARD

NEXT STEPS

# PRIORITIZING EQUITY

## East-West Connectivity



### Lakefront Route

LORAIN



LAKEFRONT TLCI STUDY (2017)

CUYAHOGA



LAKEFRONT PUBLIC ACCESS PLAN (2022)

LAKE



LAKEFRONT BIKEWAY

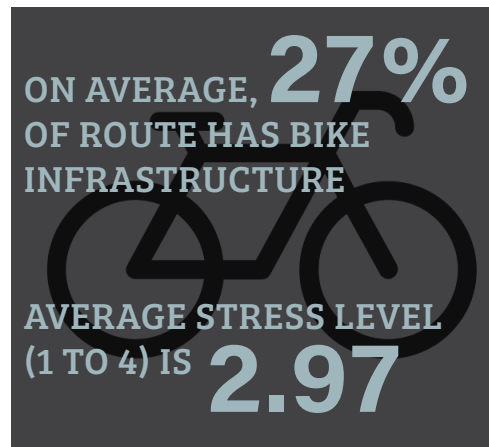
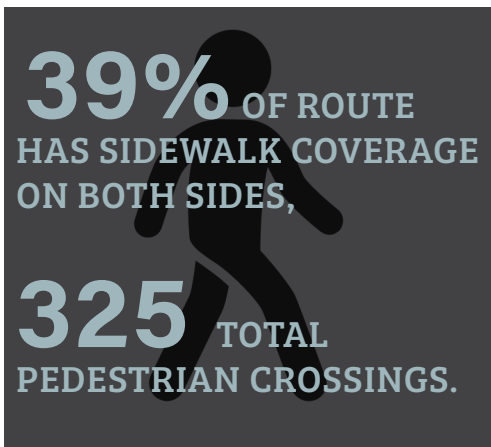
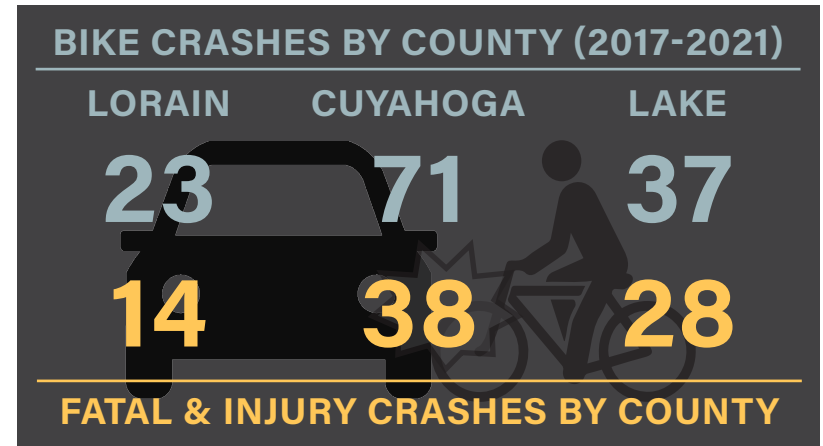
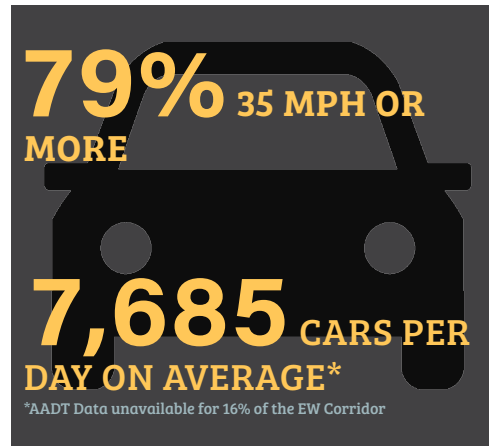
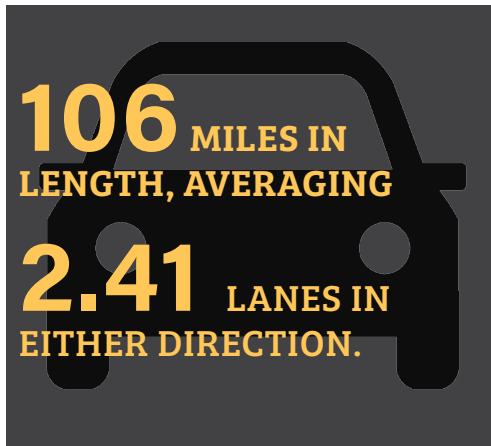


# PRIORITIZING EQUITY

## East-West Route



### Route Characteristics



# PRIORITIZING EQUITY

## Pedestrians on the East-West Route



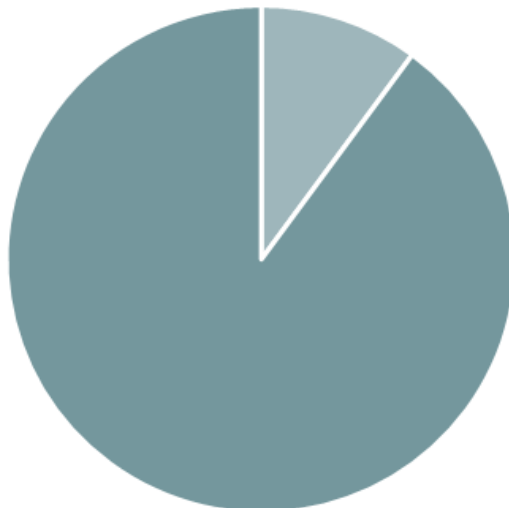
### Crosswalks

- Compared today's infrastructure to what is recommended by FHWA for base-level pedestrian safety and comfort.
- Crosswalks have different degrees of infrastructure recommended based on how fast traffic is, roadway width, etc.

**There are 325 crosswalks on the east-west lakefront route.**

**About 10% of them meet the safety recommendations FHWA includes in its Safe Travel for Every Pedestrian Program.**

**Pedestrian Crossings**



- Adequate
- Improvement Needed

# PRIORITIZING EQUITY

## Transit on the East-West Route

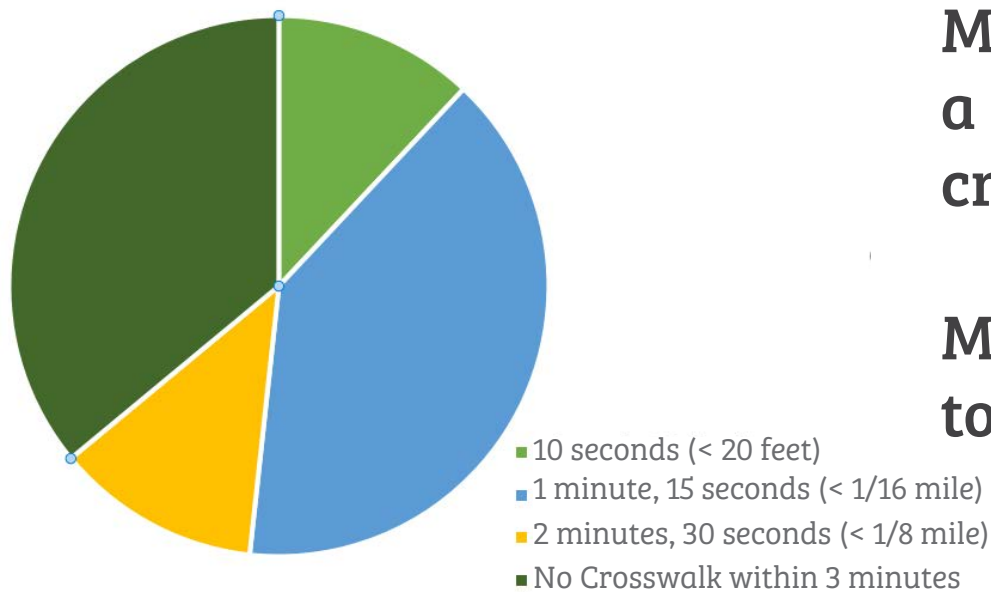


### Transit Stops

- About 70% of the lakefront is accessible within 1-mile of a transit stop on the East-West Route.
- The closer a crosswalk is to a transit stop, the less likely a pedestrian will be to use an unsafe or unmarked crossing. Generally, we think of this as a ~3 minute threshold.

**About 70% of the lakefront sites are within 1-mile of a transit stop directly on the East-West Route.**

### Walking Time from Stop to Crosswalk



**Many stops are not within a reasonable distance of a crosswalk leading to the lake.**

**More work to be done on this topic!**

# PRIORITIZING EQUITY

## Lakefront Parks



EVEN THOUGH MOST LAKEFRONT LAND IS PRIVATELY-OWNED, THERE ARE...

# 59

## TOTAL

LAKEFRONT PARKS IN  
NORTHEAST OHIO!





# PRIORITIZING EQUITY

## Lakefront Parks



### RECAP

**35,000** TRIPS ARE MADE DAILY TO THE LAKEFRONT IN PEAK SEASON.

### PARK VISITORS COME FROM:

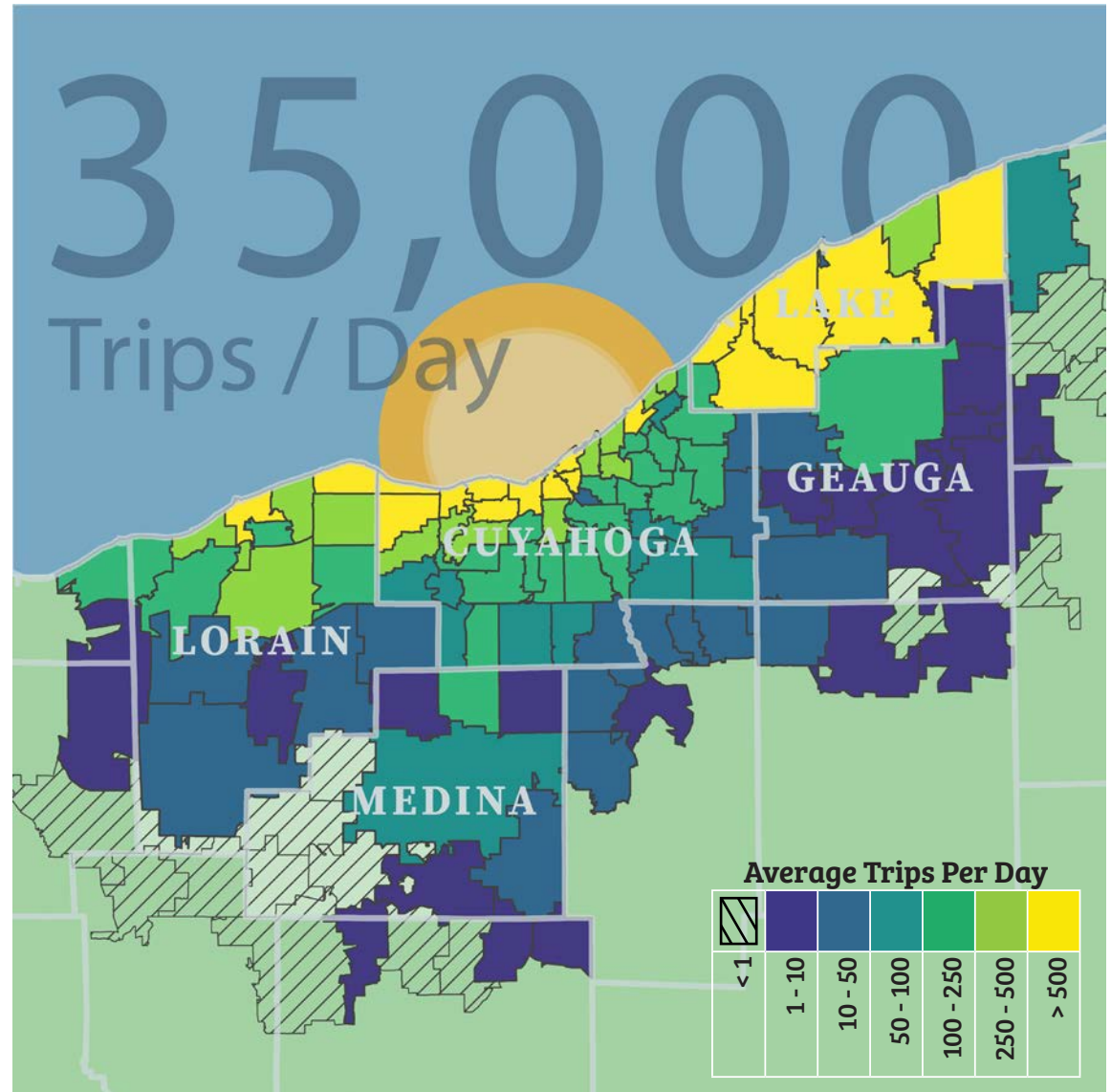
68% CUYAHOGA

17% LAKE

13% LORAIN

~2% GEAUGA & MEDINA

~1% OUTSIDE THE REGION



# PRIORITIZING EQUITY

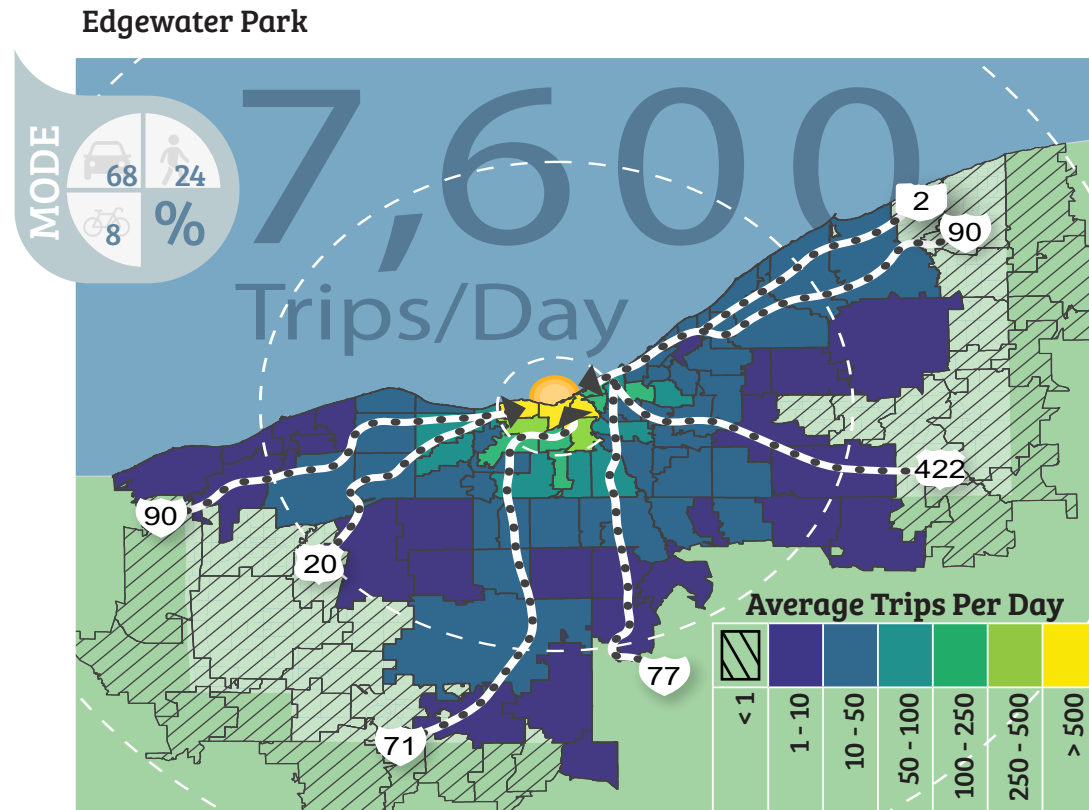
## Lakefront Parks



### RECAP

ON AVERAGE, **27%** OF LAKEFRONT TRIPS ARE MADE BY FOOT, AND LESS THAN **0.5%** OF ALL TRAVEL IN THE REGION IS ON FOOT.\*

ON AVERAGE, **4%** OF LAKEFRONT TRIPS ARE MADE BY BIKE, AND LESS THAN **0.5%** OF ALL TRAVEL IN THE REGION IS BY BIKE.\*



\*Biking and walking is a combined mode share of 0.5% of all trips. These daily trip mode shares are from the 2020 NOACA Travel Demand Model, as published in *eneo2050*.

Lakefront travel information comes from a trip generation analysis of 2019 StreetLight data.

# PRIORITIZING EQUITY

## Lakefront Parks



### ENVIRONMENTAL JUSTICE DEFINITION:

“No group of people, including racial, ethnic, or socio-economic group should bear a **disproportionate share of the negative environmental consequences** resulting from federal, state, local programs and policies.” - US EPA

**54% OF THE LAKEFRONT POPULATION LIVES IN “EJ” AREAS**



# PRIORITIZING EQUITY

## Lakefront Parks



### 15 PARKS ATTRACT A MAJORITY OF EJ TRIPS TODAY

SITE NAME	COUNTY	COMMUNITY
Lakeview Park	Lorain	Lorain
Showse Park	Lorain	Vermilion
Cahoon Memorial Park	Cuyahoga	Bay Village
Edgewater Park	Cuyahoga	Cleveland
Euclid Beach	Cuyahoga	Cleveland
Gordon Park/Lakefront Nature Preserve	Cuyahoga	Cleveland
Lakewood Park	Cuyahoga	Lakewood
North Coast Harbor/Voinovich/E. 9th	Cuyahoga	Cleveland
Sims Park	Cuyahoga	Euclid
Villa Angela and Wildwood	Cuyahoga	Cleveland
Fairport Harbor Lakefront Park	Lake	Fairport Harbor
Headlands Beach State Park	Lake	Painesville Township
Madison Township Park	Lake	Madison Township
Osborne Park	Lake	Willoughby
Willowick City Hall/Lakefront Lodge	Lake	Willowick

# PRIORITIZING EQUITY

## Lakefront Parks



### 13 PARKS IN EJ AREAS, WITH LOW VISITATION

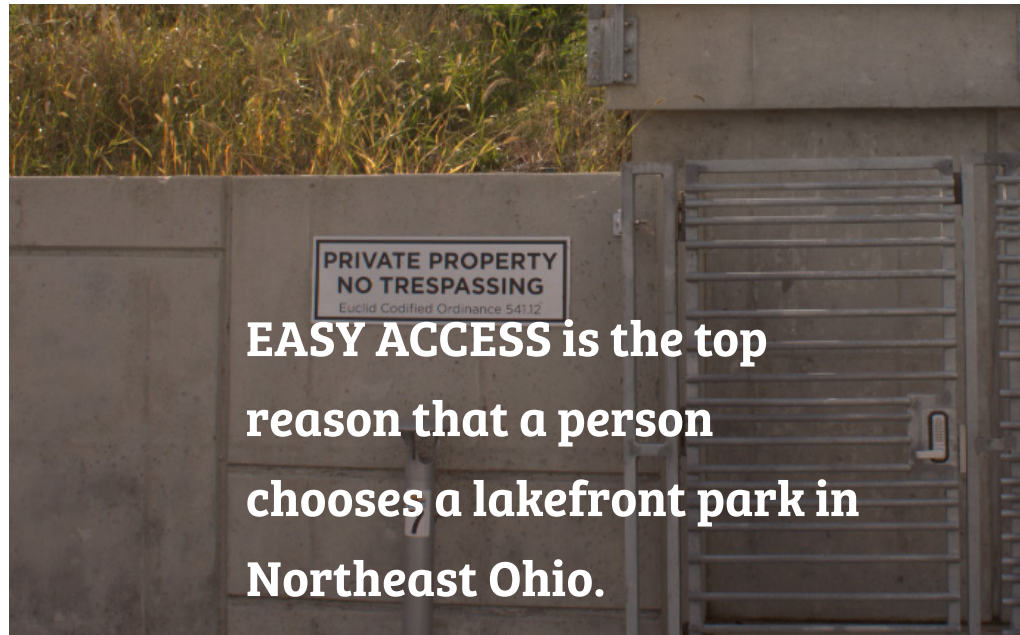
SITE NAME	COUNTY	COMMUNITY
Brownhelm Township Lakefront Park	Lorain	Vermilion
Century Park	Lorain	Lorain
Lakeside Landing	Lorain	Lorain
Lorain Public Pier and Boat Ramp	Lorain	Lorain
Waverly Place Park	Lorain	Lorain
Cliff Drive Scenic Access	Cuyahoga	Lakewood
East 55th Street Marina	Cuyahoga	Cleveland
Euclid Park	Cuyahoga	Cleveland
Mentor Beach Park	Lake	Mentor-on-the-Lake
Mentor Lagoons Nature Preserve	Lake	Mentor
Quentin Road Park	Lake	Eastlake
Sunset Park	Lake	Willoughby
Beachview Road Scenic Access	Lake	Willoughby

# PRIORITIZING EQUITY

## Lakefront Parks



While many of these parks are small and offer few amenities, others have many amenities but **noticeable transportation needs.**



# PRIORITIZING EQUITY

## Equity “Zones”



**Draft Equity Priority Areas- can be used to target investments,  
guide public outreach,  
& more!**

# LAKEFRONT PARKS



# PRIORITIZING EQUITY

## Equity “Zones”

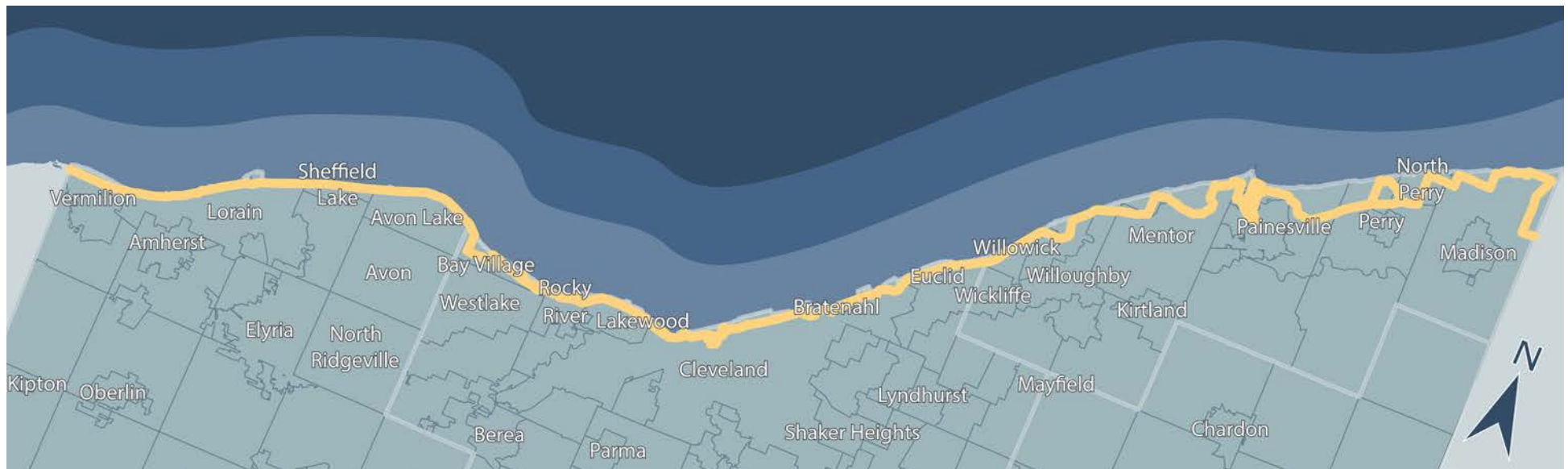


Draft Equity Priority Areas- can be used to target investments,

guide public outreach,

& more!

# EAST - WEST CORRIDOR





# PRIORITIZING EQUITY

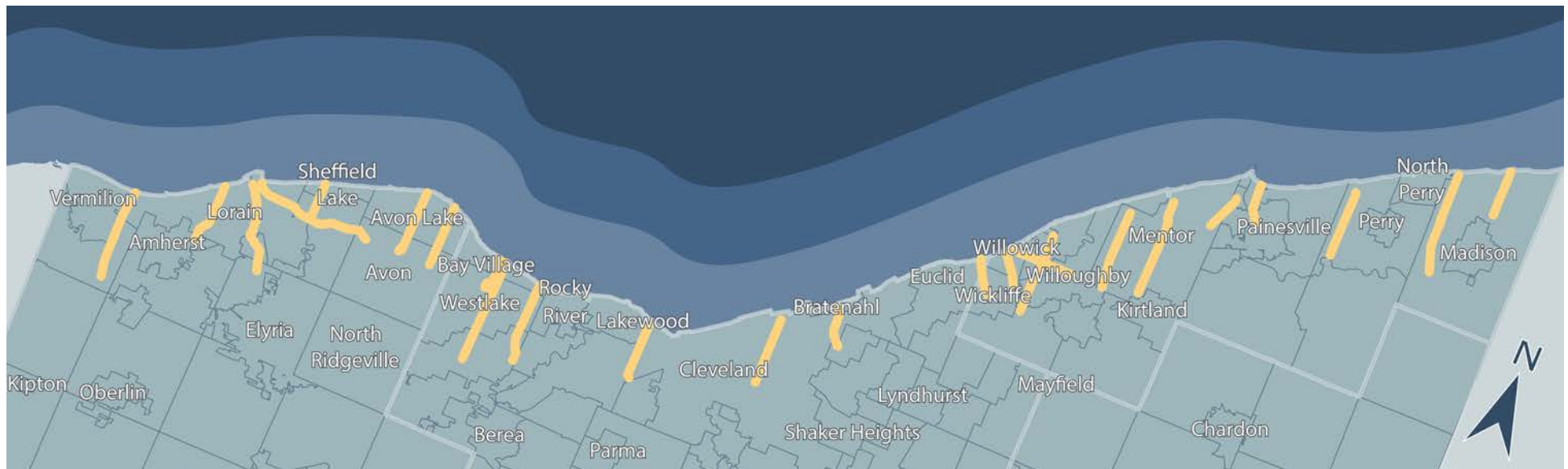
## Equity “Zones”



**Draft Equity Priority Areas- can be used to target investments,  
guide public outreach,**

**& more!**

# NORTH - SOUTH CORRIDORS



# PRIORITIZING EQUITY

## Equity “Zones”



Draft Equity Priority Areas- can be used to target investments,

guide public outreach,

& more!

**TOGETHER,** THESE ZONES SHOWS US WHERE EQUITY COULD BE IMPROVED OR ENHANCED.



# AGENDA



INTRODUCTION

PRIORITIZING EQUITY

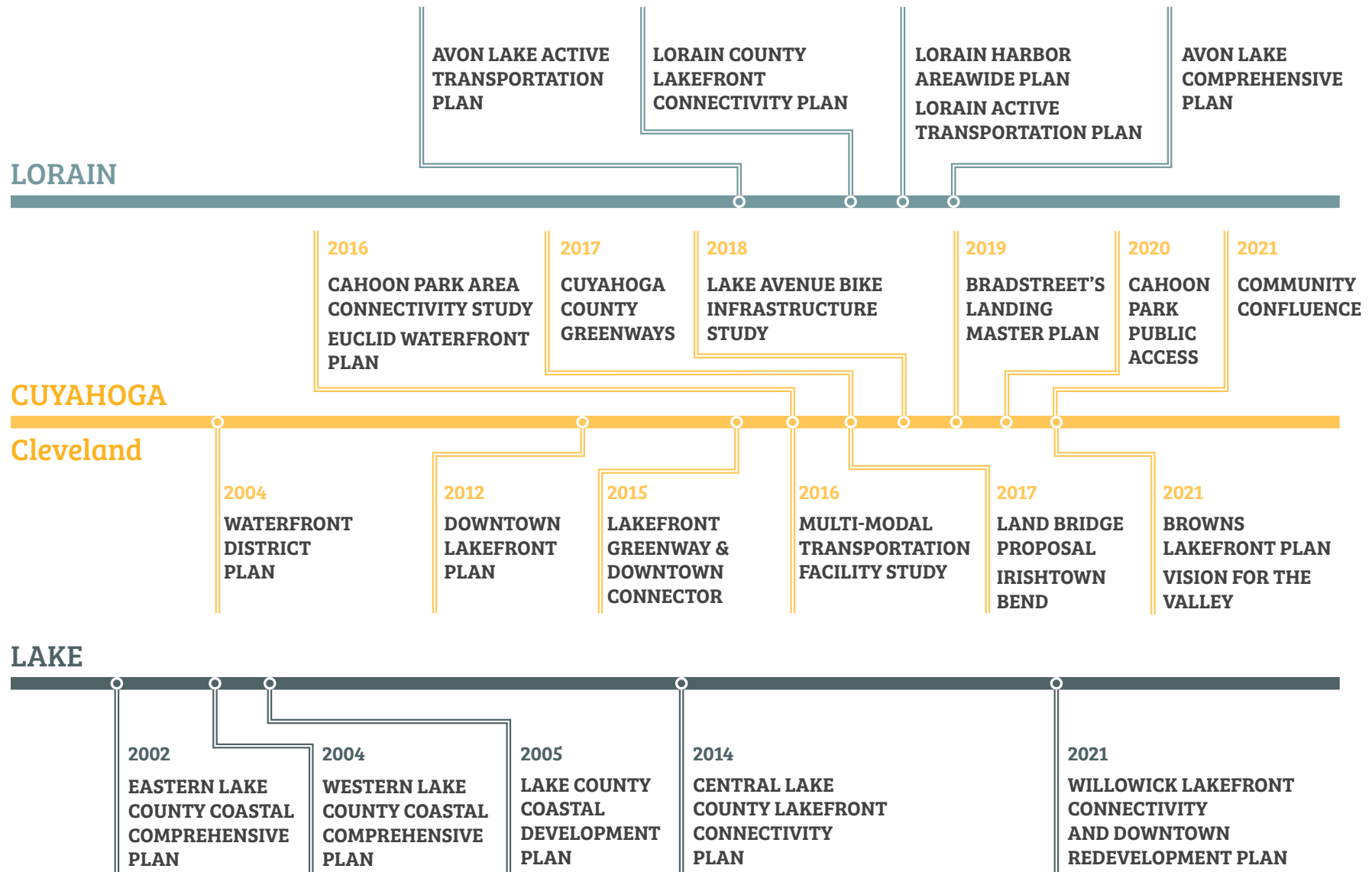
**LAKEFRONT INITIATIVES**

THE PATH FORWARD

NEXT STEPS

# LAKEFRONT INITIATIVES

Many Plans, One Vision



# LAKEFRONT INITIATIVES

Many Plans, One Vision



## Lakefront Planning has made bold recommendations for...



# LAKEFRONT INITIATIVES

Many Plans, One Vision



## Lakefront Planning has made bold recommendations for... Expanding Transit



# LAKEFRONT INITIATIVES

Many Plans, One Vision



**Lakefront Planning** has made bold recommendations for...

**Expanding Transit**  
**Protecting Pedestrians**



# LAKEFRONT INITIATIVES

Many Plans, One Vision



**Lakefront Planning** has made bold recommendations for...

**Expanding Transit**

**Protecting Pedestrians**

**Improving parks/trails**





# LAKEFRONT INITIATIVES

Many Plans, One Vision



**Lakefront Planning** has made bold recommendations for...

**Expanding Transit**

**Protecting Pedestrians**

**Improving Parks/Trails**

**Growing the Regional Bike Network**



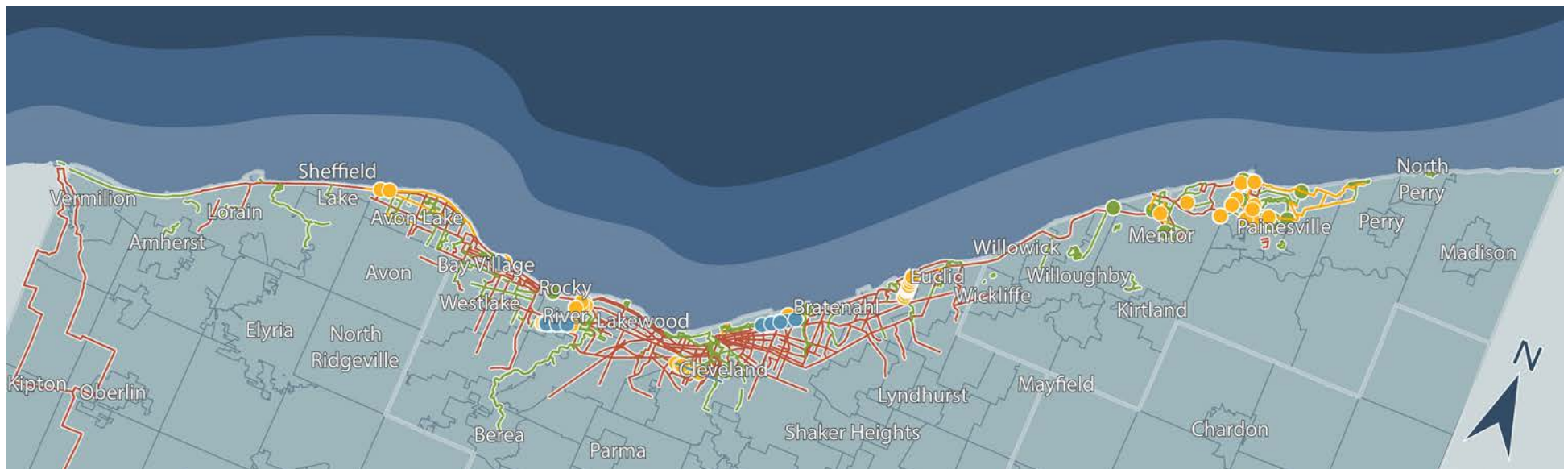
# LAKEFRONT INITIATIVES

Many Plans, One Vision



**Lakefront Planning** has made bold recommendations throughout the Region!

**Where are the gaps for us to focus on?**



# LAKEFRONT INITIATIVES

## East-West Route



**78%** of the planned east-west coastal route has been studied for multimodal improvements already.

The major gaps are in eastern Lake County.



# LAKEFRONT INITIATIVES

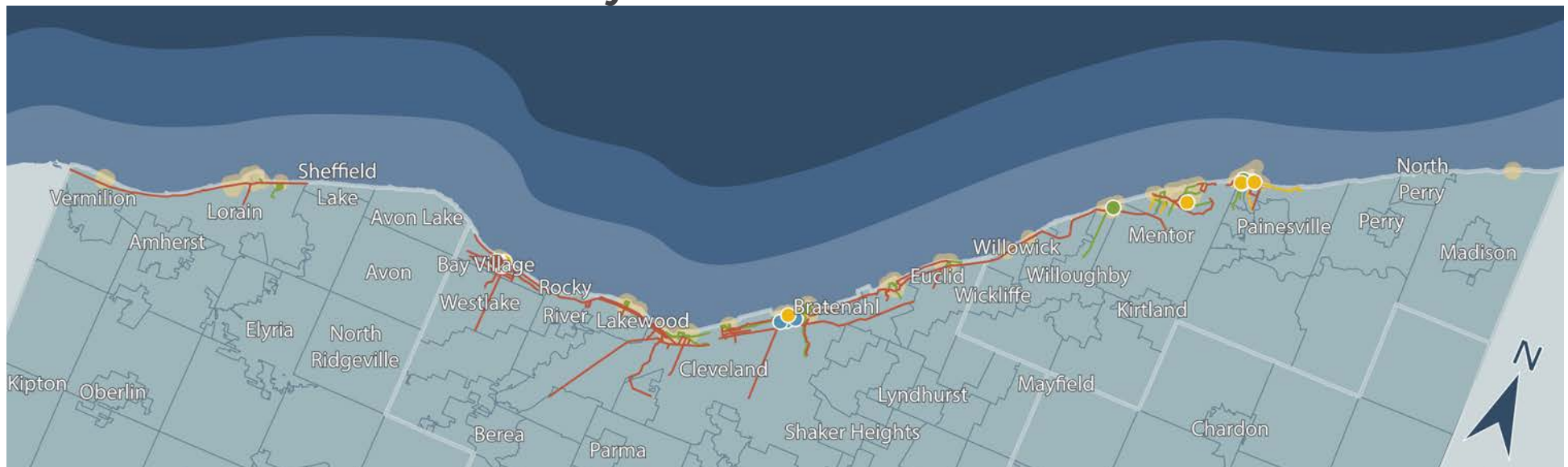
## Equity Priority Areas



**21%** of the planned improvements are within an  
**Equity Priority Area**

- Equity Priority Areas make up 54% of land within 1mi of the Lakefront

**Major gaps include Eastern Lake County, Western Cuyahoga County, and Eastern Lorain County**



# AGENDA



INTRODUCTION

PRIORITIZING EQUITY

LAKEFRONT INITIATIVES

**THE PATH FORWARD**

NEXT STEPS

# THE PATH FORWARD

## Major Remaining Items



**DESIGN  
ENHANCEMENT  
CONCEPTS FOR 3  
LAKEFRONT PARKS**

**CORRIDOR  
ALTERNATIVES  
FOR MULTIMODAL  
TRANSPORTATION**

**A REGIONAL  
INVENTORY OF  
PLANNING  
RECOMMENDATIONS,  
PRIORITIZED WITH  
MODAL AND SPATIAL  
EQUITY**

# THE PATH FORWARD

## Site Selection for Design Concepts



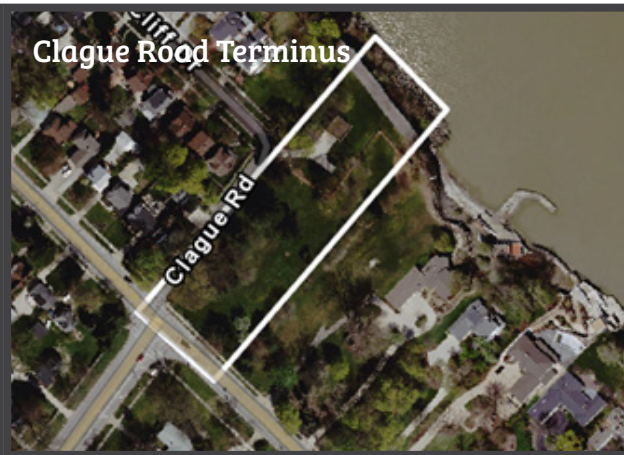
### Site Criteria:

Stalled and/or inactive planning efforts, lower visitation, close to neighborhoods

### Proposed Sites for Further Study



Lorain County



Cuyahoga County



Lake County

# THE PATH FORWARD

## Corridor Options for Future Study



### LORAIN

From West to East...

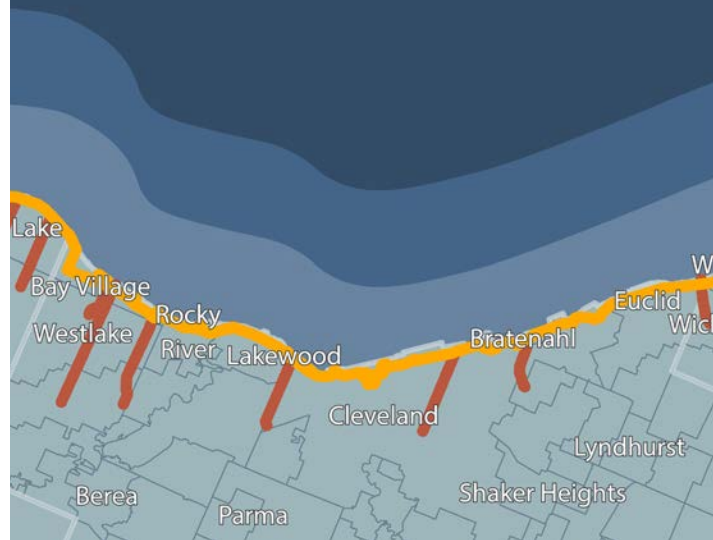
- BAUMHART RD
- LEAVITT RD
- BROADWAY
- COLORADO AVE
- LAKEBREEZE RD
- AVON-BELDEN RD
- LEAR RD



### CUYAHOGA

From West to East...

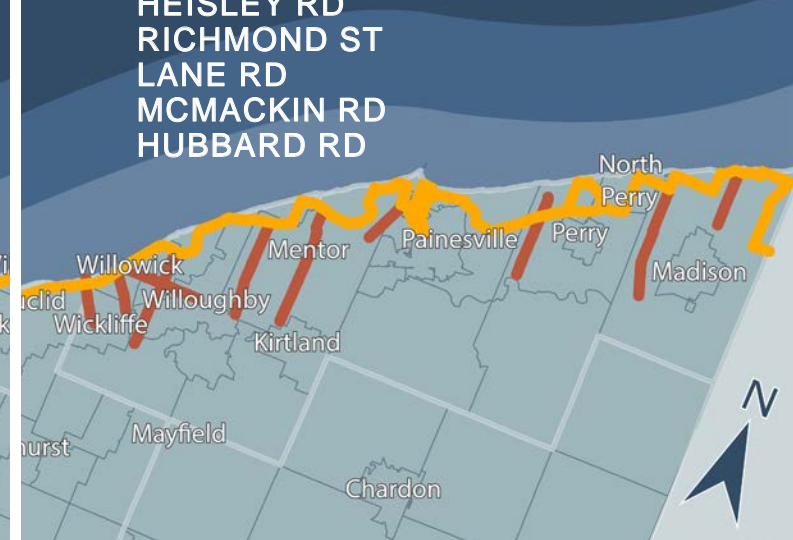
- DOVER CENTER RD
- CLAGUE RD
- W 117TH ST
- E 55TH ST
- EDDY RD
- LLOYD RD



### LAKE

From West to East...

- E 305TH ST
- LLOYD RD
- VINE ST
- SOM CENTER RD
- REYNOLDS RD
- CENTER ST
- HEISLEY RD
- RICHMOND ST
- LANE RD
- MCMACKIN RD
- HUBBARD RD



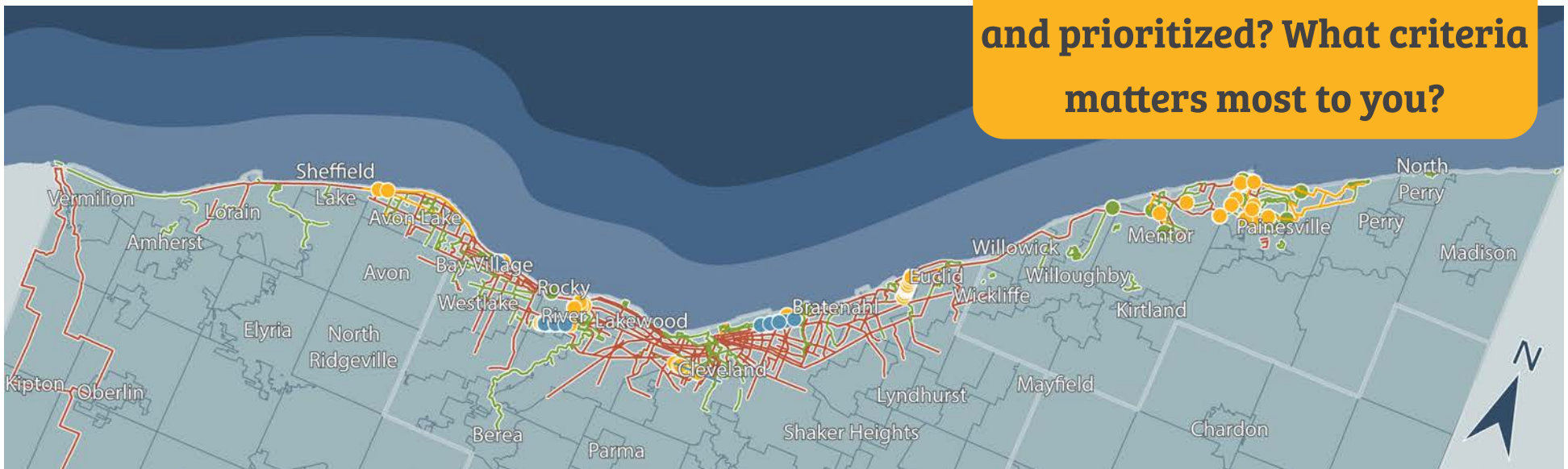


# THE PATH FORWARD

## RECOMMENDATION INVENTORY



**How would you like to see recommendations packaged and prioritized? What criteria matters most to you?**



# AGENDA



INTRODUCTION

PRIORITIZING EQUITY

LAKEFRONT INITIATIVES

THE PATH FORWARD

**NEXT STEPS**

# NEXT STEPS

## Project Timeline



### Community Engagement

- Summer Walking Workshop Series Continues
- Public Open House Series in Early Fall

### Steering Committee 3 Agenda

- Draft Recommendations
- Multimodal Alternatives
- Park Improvements
- Engagement Summary
- Plan Recommendations

### Study Timeline

AUG 2021 - MAR 2022	AUG 2021: Project Kickoff
	OCT 2021: Site Visits
MAR 2022 - AUG 2022	MAR 2022: SC #1
	JUNE 2022: SC #2
	AUG 2022: SC #3

Existing Conditions Research and Report

2021  
2022



# Thank you!



**Comments, ideas, feedback?**

**Send us a message: [lakeerieconnect.com](http://lakeerieconnect.com)**