

# Chagrin CONNECT



Part of the NOACA  
Lake Erie Connect Study

WELCOME

ABOUT

FINDINGS

ACTIVITY

GOALS

NEXT STEPS

**WELCOME**

ABOUT

FINDINGS

ACTIVITY

GOALS

NEXT STEPS

# WELCOME!

## Introductions

project managers



steering committee



consultant team



# WELCOME!

Today's Objectives

**1**

**LEARN  
ABOUT THE  
PROJECT**

**2**

**REVIEW  
PRELIMINARY  
FINDINGS**

**3**

**SHARE YOUR  
VISION FOR  
THE RIVER**

# WELCOME!

Steering Committee Role



**SHARE YOUR  
KNOWLEDGE**

**DREAM BIG WITH US!**

**THANK YOU FOR YOUR TIME AND SUPPORT!**

**GUIDE AND REFINE  
CONCEPTS**

**CARRY THE  
VISION  
FORWARD**

WELCOME

**ABOUT**

FINDINGS

ACTIVITY

GOALS

NEXT STEPS

**June 2019**

**Eastlake City  
Hall Meeting  
Discussion**

**CRWP Explores  
Funding Options**

**Awarded Cleveland  
Foundation Grant**

**Stakeholders Explored  
& Acquired Further  
Funding**



# ABOUT

## Project Purpose



1. Create comprehensive regional trail and public access plan to Lake Erie and the Chagrin River
2. Determine priority sites for waterfront access opportunities
3. Leverage the concurrent NOACA Lake Erie Connect study

# ABOUT

## Study Area

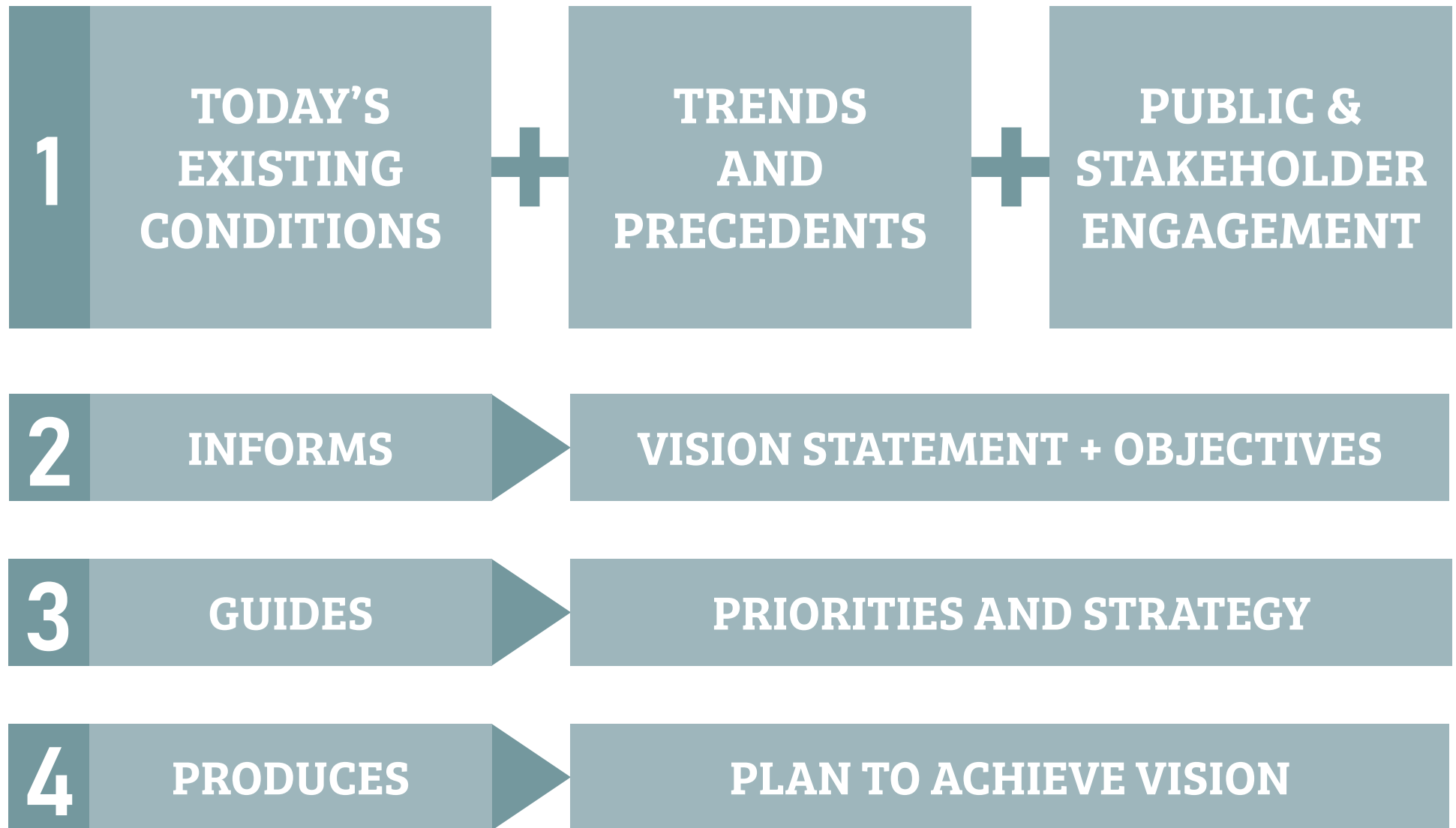
**Ten municipalities** in Western Lake County surrounding the lower (downstream) portion of the Chagrin River:

Willowick, Lakeline, Eastlake,  
Willoughby, Mentor-on-the-Lake,  
Mentor, Waite Hill, Kirtland,  
Willoughby Hills, Wickliffe



# ABOUT

## Planning Process



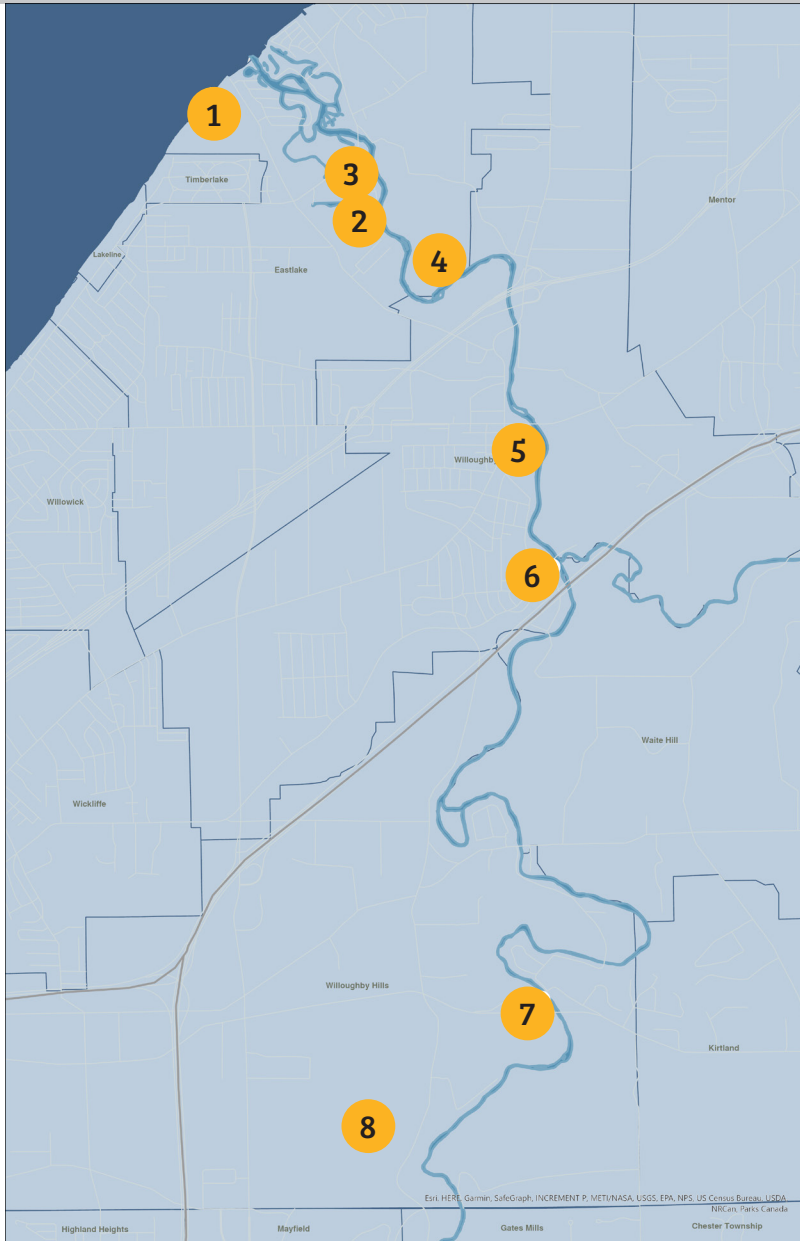
# ABOUT

## Project Timeline



# ABOUT

## Priority Access Sites



- 1 First Energy / Erie Rd. Pier
- 2 Eastlake Soccer Park
- 3 Boracs Landing
- 4 Chagrin River Park
- 5 Todd Field
- 6 Daniels Park
- 7 Pleasant Valley Park
- 8 Chagrin River Reservation

WELCOME

ABOUT

**FINDINGS**

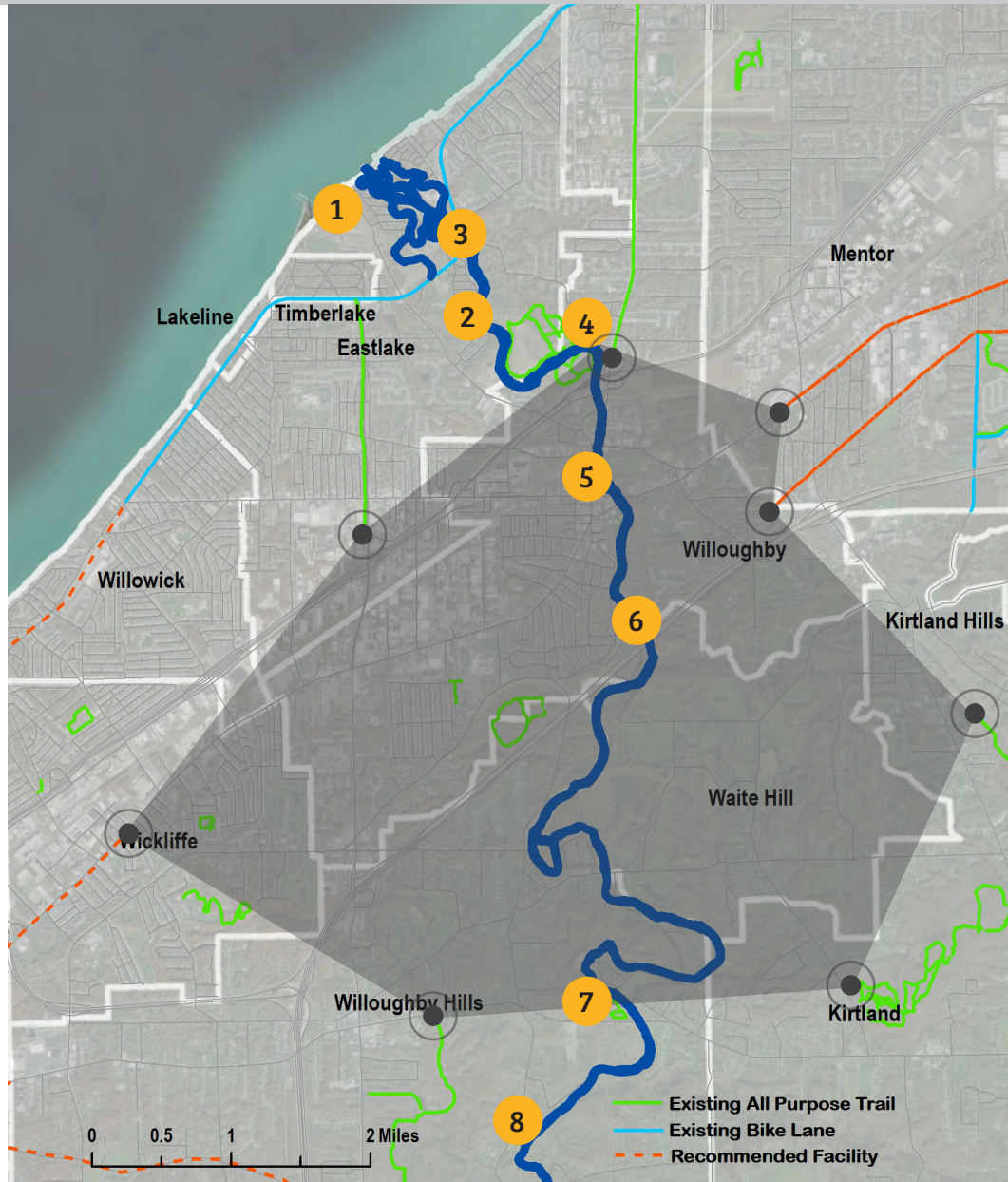
ACTIVITY

GOALS

NEXT STEPS

# FINDINGS

## Bike Infrastructure



- # Site Number
- Connection Opportunity
- Network Connectivity Gap

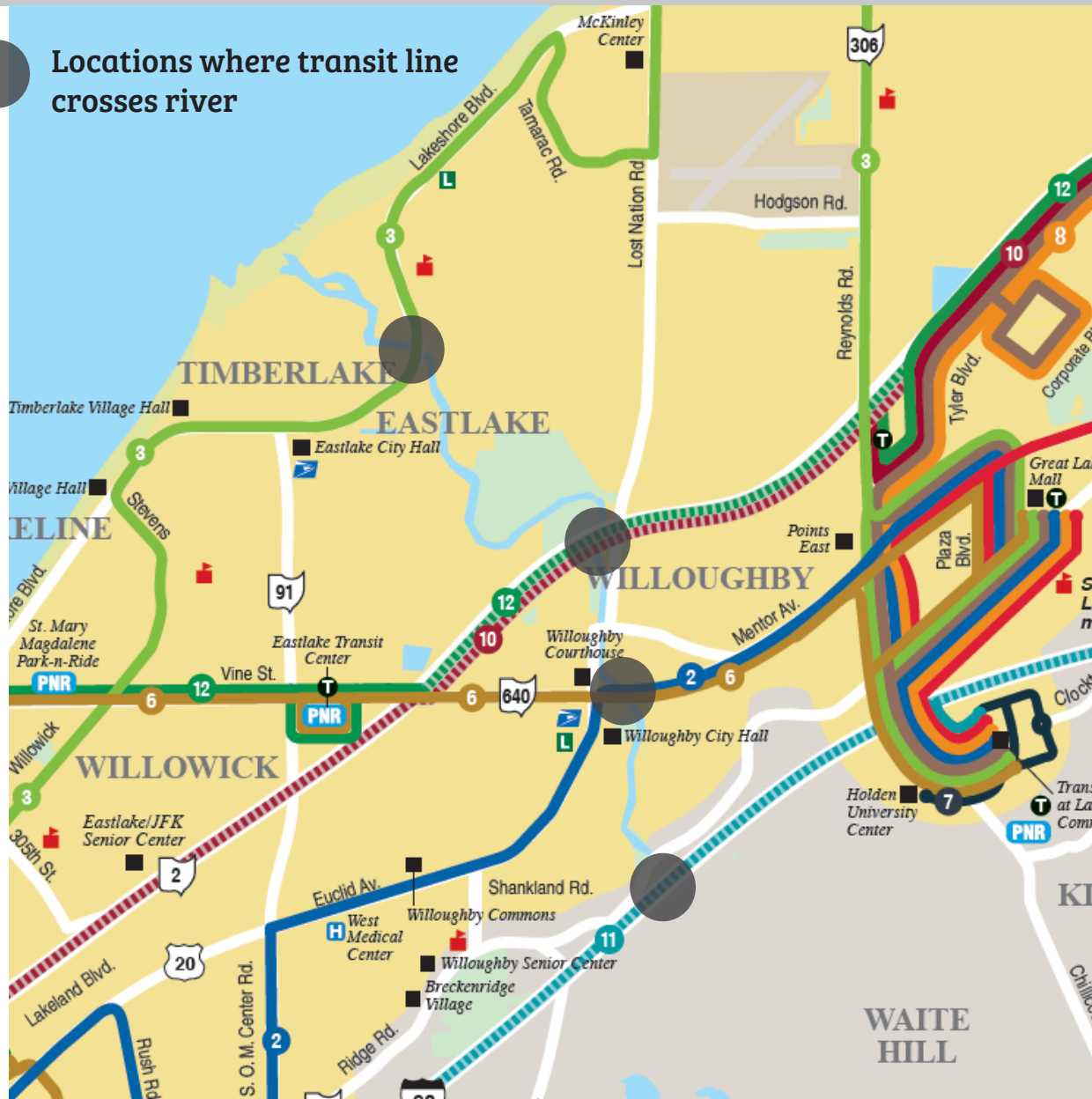
### KEY FINDINGS:

- Opportunities to connect laterally across the river exist
- North / south connections are less apparent
- Large gap in available bike infrastructure in middle of river / study area

# FINDINGS

## Transit Infrastructure

Locations where transit line crosses river



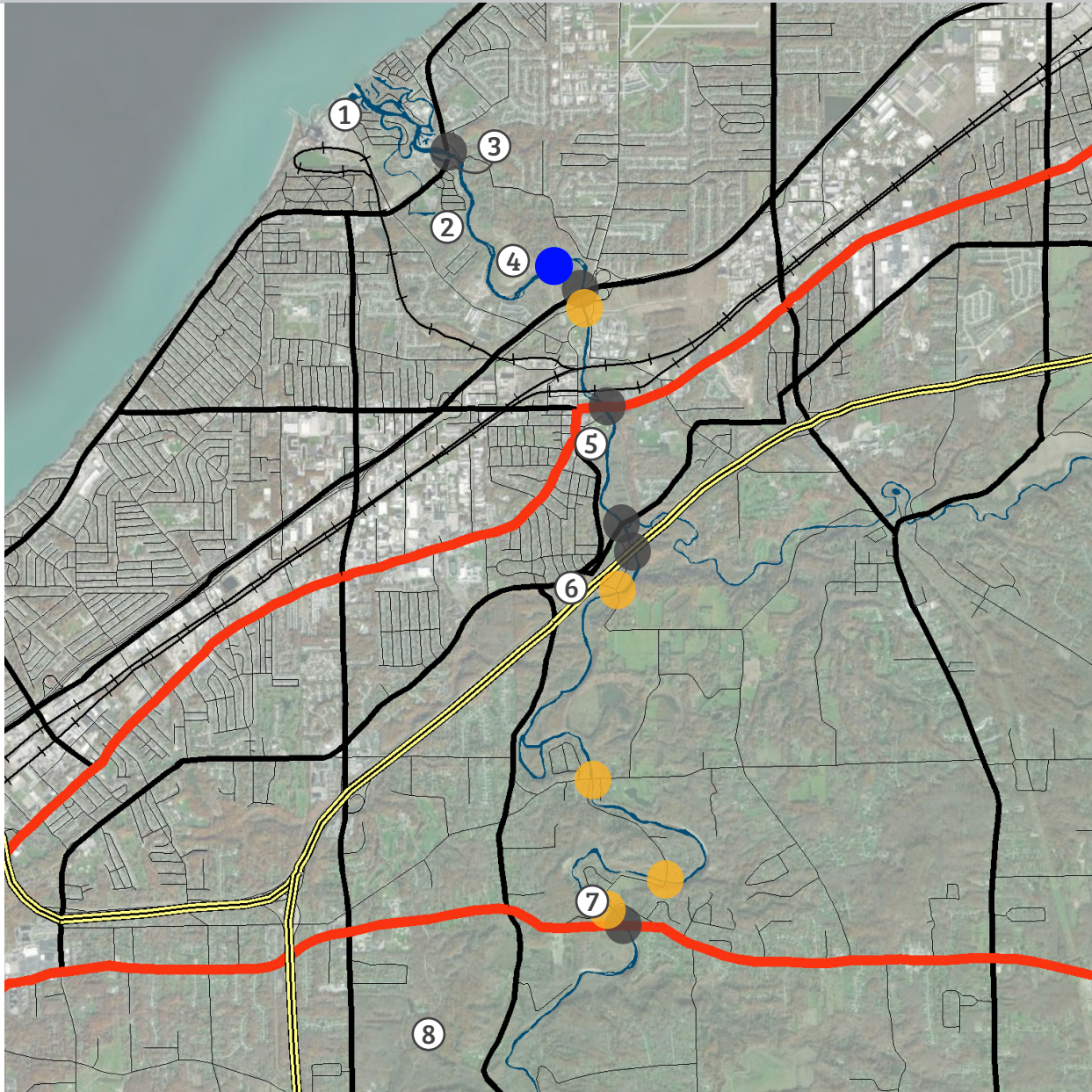
### KEY FINDINGS:

- No north/south transit connectivity
- Several transit lines cross river
- 3 of the 6 transit lines = nonstop



# FINDINGS

## Road Infrastructure



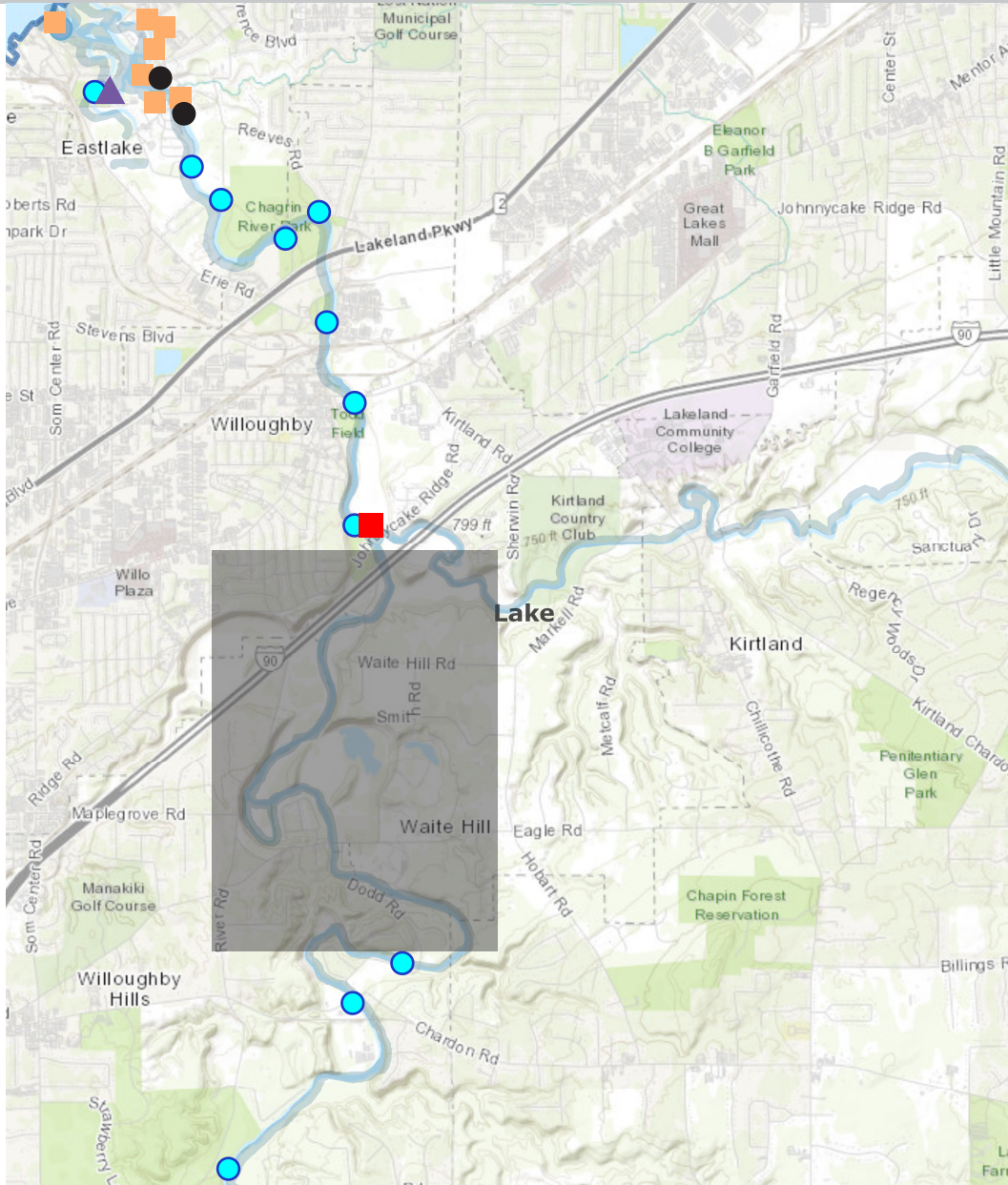
- Major Road Crossing
- Minor Road Crossing
- Pedestrian Only Crossing
- Ⓢ Site






### KEY FINDINGS:

- Northern Chagrin River has many major road crossings; few minor road crossing opportunities
- Southern portion has large gap in between minor road crossing opportunities
- Only one strictly pedestrian crossing

# FINDINGS

## Waterway Access



-  Motorized Launch
-  Motorized Dock
-  Motorized Launch and Dock
-  Paddling Access
-  Paddling Hazard

### KEY FINDINGS:

- Many motorized docks exist at the headwaters but most private
- Well-spaced paddling access points on the lower river
- Large access and pull-off **gap** from North Chagrin Reservation to eastern branch
- Paddling hazard is already planned for removal

# FINDINGS

## Site Visits

**1** Erie Road Park / First Energy Pier Eastlake

**2** Soccer Park Eastlake

Link to Google My Map

**3A** Borac's Landing Eastlake

**3B**

**4** Chagrin River Park Willoughby

Bike Infrastructure

willoughby hills community center route 6 - connects to bike trail, north chagrin

hoch ois nature preserve - cleveland auditorium - willoughby hills, just north of pleasant valley

weir leads but not open to public, in context between hoch office and daniel park

Existing All Purpose Trail  
Existing Bike Lane  
Proposed/Underway Facility

**5** Todd Field Willoughby

**6** Daniels Park Willoughby

**7** Pleasant Valley Park Willoughby Hills

Missing link for trails to connect to the metropark

**8** Chagrin River Reservation Willoughby Hills

- Today:
1. 3 development sites
  2. Close trail gaps/connect sites
  3. Pros and cons on each sites

steering committee date - last 2 weeks of jan - doodle poll - meeting preferable 8:30/9am

THANK YOU!

WELCOME

ABOUT

FINDINGS

**ACTIVITY**

GOALS

NEXT STEPS

# ACTIVITY

## Directions

1. Join the Zoom breakout group
2. Click on the link provided in the Zoom chat to join Mural
3. Let us know if there are any issues



WELCOME

ABOUT

FINDINGS

ACTIVITY

**GOALS**

NEXT STEPS

## 1. Big Picture

## 2. Individual Sites


Go to [www.menti.com](http://www.menti.com) and use the code 6225 5930

Mentimeter


# Instructions

Go to  
**[www.menti.com](http://www.menti.com)**

Enter the code  
**6225 5930**



Or use QR code



WELCOME

ABOUT

FINDINGS

ACTIVITY

GOALS

**NEXT STEPS**



**1. Issuing Existing Conditions Report**

**2. Releasing Public Survey**

**3. Assist in Survey Distribution**

# Thank you!



**Comments, ideas, feedback?**

Send us a message: [lakeerieconnect.com](http://lakeerieconnect.com)